



streamex

**The Future of Commodity
Markets Powered by
Tokenization**

Corporate Presentation
May 2026 | Nasdaq: STEX

Disclaimers

GENERAL

This presentation has been prepared by Streamex Corp., a company organized under the laws of Delaware (“Streamex” or the “Company”), for informational purposes only and not for any other purpose. This presentation is being furnished solely to recipients that are “accredited investors” (as defined in Rule 506 of Regulation D) (any such recipient, together with its subsidiaries and affiliates, the “Recipient”). By reading this presentation, the Recipient will be deemed to have agreed to the obligations and restrictions set out below. In particular, Streamex has prepared this presentation to inform prospective investors about GLDY tokens, which will be issued by Streamex Ltd., a Cayman Islands limited company.

This presentation and any oral statements made in connection with this presentation are not intended to and shall not constitute an offer to sell or the solicitation of an offer to sell or the solicitation of an offer to buy any securities or a solicitation of any vote or approval, nor shall there be any sale of securities in any jurisdiction in which such offer, solicitation or sale would be unlawful prior to registration or qualification under the securities laws of any such jurisdiction. This presentation does not constitute either advice or a recommendation regarding any securities. Any offer to sell securities will be made only pursuant to a definitive subscription agreement and related documentation and will be made in reliance on an exemption from registration under the Securities Act or offers and sales of securities that do not involve a public offering. Any other solicitation or offering of securities shall be made only by means of a prospectus meeting the requirements of the Securities Act or an exemption therefrom. The Company reserves the right to withdraw or amend for any reason any offering and to reject any subscription agreement for any reason, or for no reason. The communication of this presentation is restricted by law; it is not intended for distribution to, or use by any person in, any jurisdiction where such distribution would be contrary to local law or regulation. The Recipient acknowledges that it is (a) aware that the United States securities laws prohibit any person who has material, non-public information concerning a company from purchasing or selling securities of such company or from communicating such information to any other person under circumstances in which it is reasonably foreseeable that such person is likely to purchase or sell such securities, and (b) familiar with the Securities Exchange Act of 1934, as amended, and the rules and regulations promulgated thereunder (collectively, the “Exchange Act”), and that the Recipient will neither use, nor cause any third party to use, this presentation or any information contained within in contravention of the Exchange Act, including, without limitation, Rule 10b-5 thereunder.

None of the Company, nor any of its subsidiaries, equity holders, affiliates, representatives, partners, members, directors, officers, employees, advisers or agents (collectively, the “Representatives”) makes any representation or warranty, express or implied, as to the accuracy or completeness of the information contained herein or any other written, oral or other communications transmitted or otherwise made available to the Recipient in the course of its evaluation of the transactions, and nothing contained herein shall be relied upon as a promise or representation whether as to the past or future performance. To the fullest extent permitted by law, the Company nor any of its Representatives shall be responsible or liable for any direct, indirect or consequential loss or loss of profit arising from the use of this presentation, its contents, its accuracy or sufficiency, its omissions, its errors, reliance on the information contained within it, or on opinions communicated in relation thereto or otherwise arising in connection therewith. In addition, the information contained herein does not purport to contain all of the information that may be required to evaluate the transactions. The information contained in this presentation is provided as of the date hereof and may change, and the Company nor any of its Representatives undertake any obligation to update such information, including in the event that such information becomes inaccurate or incomplete. The general explanations included in this presentation cannot address, nor is intended to address, your specific investment objectives, financial situations or financial needs.

CAUTIONARY NOTE REGARDING FORWARD-LOOKING STATEMENTS

We have prepared this presentation solely to illustrate the businesses of Streamex (in particular, the issuance of GLDY Tokens by Streamex Ltd.), and it does not constitute an offer to sell, or a solicitation of an offer to buy, any securities of Streamex. This presentation contains “forward-looking statements”, which can be identified by words such as: “anticipate”, “intend”, “plan”, “goal”, “seek”, “believe”, “project”, “estimate”, “expect”, “strategy”, “future”, “likely”, “may”, “should”, “will” and similar references to future periods. Examples of forward-looking statements include, among others, statements Streamex makes regarding:

- the expected ability of Streamex Ltd. to execute on its business plan and develop, utilize and commercialize Blockchain technology to bring to market a stablecoin offering investors exposure to the spot price of gold plus yield;
- the expected capabilities of the Streamex platform, including Streamex Ltd., to deliver functionality that provides clients with access to on-chain tools to facilitate the design and instantiation of tokenized structured products and securitization of commodity opportunities and treasury management solutions, and that provides investor end-users with access to such opportunities and an ability to acquire and manage such products within their portfolio;
- the expected usefulness of Blockchain technology as a tool to ensure complete delivery of the on-chain commodity markets, tokenized commodity solutions and treasury management solutions;
- the expected ability of Streamex to leverage Blockchain technology to ensure the delivery of such solutions on the Streamex platform;
- the expected use cases and functionality of the tokenized structured products on the Streamex platform;
- the expected use cases and ability for the Streamex platform and related solutions to solve the pain-points in the incumbent financial services and investment environment within the Gold and commodities markets;
- the expected emergence of a community of clients seeking Blockchain enabled financial services and products and investor end-users and investors within the Streamex ecosystem and Streamex’s ability to execute on its expected solutions required to build and scale such a community;
- the ability of Streamex to further develop the Streamex platform in the manner and within the time frame currently expected;
- Streamex’s expected go-to-market strategy and timeline for growth, product development, market position and expansion; and

Forward-looking statements are neither historical facts nor assurances of future performance. Instead, they are based only on our current beliefs, expectations and assumptions regarding the future of our business, future plans and strategies, projections, anticipated events and trends, the economy and other future conditions. Because forward-looking statements relate to the future, they are subject to inherent uncertainties, risks and changes in circumstances that are difficult to predict and many of which are outside of our control. Our actual results and financial condition may differ materially from those indicated in the forward-looking statements. Therefore, you should not rely on any of these forward-looking statements. Important factors that could cause our actual results and financial condition to differ materially from those indicated in the forward-looking statements include, among others, the following:

- economic and financial conditions, including volatility in interest and exchange rates, commodity and equity prices and the value of financial assets;
- volatility in the capital or credit markets;
- the impact of securities regulation on the ability of Streamex to create a financial and marketplace economy based on the currently intended business model;
- the adequacy of Streamex’s working capital and other conditions which may affect our ability to achieve the expected growth, product development, market position and expansion;
- the level of demand and financial performance of online, Blockchain enabled financial services provider and the tokenized investment structures, tools and technology Streamex will deploy, and the growth of clients and users and Blockchain industries in general;
- any changes in client and user demand;
- the ability of Streamex Ltd. to secure industrial leases with third parties and the ability for such lessee third parties to make lease payments;
- any developments and changes in laws and regulations, including increased regulation of the Blockchain industry through legislative action and revised rules and standards applied by the applicable securities regulators; and
- any disruptions to our technology network including computer systems and software, as well as natural events such as severe weather, fires, floods and earthquakes or man-made or other disruptions of our operating systems, structures or equipment.

Any forward-looking statement made by Streamex in this Presentation is based only on information currently available to Streamex and speaks only as of the date on which it is made. Except as required by applicable securities laws, Streamex undertakes no obligation to publicly update any forward-looking statement, whether written or oral, that may be made from time to time, whether as a result of new information, future developments or otherwise.

Reliance

Prospective investors should rely only on information contained in this Presentation and the associated documentation provided with this Presentation. Streamex has not authorized any other person to provide prospective investors with different information other than as contained in this Presentation. If a prospective investor is provided with different or inconsistent information, the prospective investor should not rely on such information. Before making an investment decision respecting the securities described in this Presentation, you should carefully review and consider this entire Presentation. You should also consult with your lawyer and investment, accounting and tax advisors concerning this investment.

Market and Industry Data

Unless otherwise indicated, the economic and industry data contained in this Presentation is based upon information from independent industry and government publications. While Streamex believes this data to be reliable, market and industry data is subject to variation and cannot be verified due to limits on the availability and reliability of raw data, the voluntary nature of the data gathering process and other limitations and uncertainties inherent in any statistical survey. Streamex has not independently verified the accuracy or completeness of such information contained herein.

Confidentiality

This information is being distributed to you on a confidential basis. By receiving this information, you and your affiliates and representatives agree to maintain the confidentiality of the information contained herein. Without the express prior written consent of the Company, this presentation and any information contained within it may not be (i) reproduced (in whole or in part), (ii) copied at any time, (iii) used for any purpose other than your evaluation of the Company and the Transactions or (iv) provided to any person except your employees and advisors with a need to know who are advised of the confidentiality of the information. The presentation supersedes and replaces all previous oral or written communications between the parties here to relating to the subject matter hereof.

“Please refer to the Risk Factors section in the Company’s SEC filings for additional information.”

Disclaimers Related to Past Performance Metrics

This presentation contains references to prior performance of certain asset classes and investment products, including physical gold bullion and gold ETFs. Such references are intended to inform investors about the potential differences in return that investing in GLDY could offer as compared to other products that seek to track the price of gold. Relying on these references to inform an investment decision does not come without risk, and investors should be aware that presentations of past performance are subject to, without limitation, the following risks:

Past Performance and Track Record

Past performance is not necessarily indicative, and is no guarantee, of future results. No assurance can be given that the GLDY Tokens will achieve their intended return or that investors will not lose all or a portion of their investment. Investment results may vary substantially over time as a result of market conditions, lease portfolio composition, fees and expenses, and other factors, many of which are unpredictable and beyond the control of Streamex.

Comparability and Differences from Prior Results

Any performance information presented herein may relate to one or more products, indices, accounts, or vehicles which may not be comparable to the GLDY Tokens. Differences in investment guidelines, risk constraints, use of leverage and derivatives, fees and expenses, portfolio composition, liquidity, market exposure, regulatory environments, tax status, inception dates, and duration of measurement periods can materially affect performance results and how such results may be displayed. Changes in investment personnel, research resources, service providers, risk management practices, or investment processes over time may also impact comparability. Performance achieved in a favorable market or interest-rate environment may not be repeated in a different or adverse environment.

Gross Versus Net Performance; Fees and Expenses

Performance results may be shown on a gross basis and may not reflect the deduction of management fees, performance-based compensation, carried interest, organizational expenses, brokerage commissions, transaction costs, financing costs, administrative and other operational expenses, taxes, and other fees that would reduce an investor's actual returns.

Realized Versus Unrealized Results; Valuation Risk

Performance figures may include unrealized gains and losses that are subject to change and may never be realized. Valuations of illiquid, thinly traded, privately held, or otherwise hard-to-value securities typically involve significant judgment and may be based on estimates, models, or third-party inputs that could prove inaccurate or incomplete. Differences in valuation methodologies, pricing sources, and timing can materially impact reported returns, net asset values, and other performance metrics. Realized results may differ materially from unrealized marks.

Hypothetical, Back-Tested, Target, and Model Performance

Track record information may be subject to selection bias, survivorship bias, backfill bias, and lookahead bias. Any hypothetical, back-tested, target, projected, or model performance is inherently limited and prepared with the benefit of hindsight or assumptions that may not materialize. Such results do not reflect actual trading, liquidity constraints, market disruptions, economic cycles, behavioral responses, operational risks, or the impact of fees and expenses unless expressly stated. Hypothetical results are subject to numerous material limitations and should not be relied upon as an indication of the future performance of the GLDY Tokens. No representation is made that any investment or strategy will achieve returns or losses similar to those shown. Any comparisons to indices or benchmarks are provided for illustrative purposes only. Benchmark selection may be subjective.

Data Quality, Calculation Methods, and Revisions

Performance information may be derived from internal records, third-party administrators, custodians, pricing services, or other sources believed to be reliable, but no assurance is given as to accuracy, completeness, or timeliness. Different calculation methodologies, including time-weighted versus money-weighted returns, use of gross or net returns, treatment of cash and cash equivalents, and treatment of fees and expenses, can produce materially different results. Performance figures are subject to ongoing verification and may be restated or updated without notice.

No Reliance; Not Investment Advice

Any performance information is provided solely for illustrative and informational purposes and should not be relied upon as the basis for making an investment decision. The presentation of past performance does not constitute investment, legal, accounting, or tax advice, and does not constitute an offer to sell or a solicitation of an offer to buy any securities. Any such offer or solicitation will be made only pursuant to definitive offering materials, which should be reviewed carefully, including the risk factors and conflicts of interest, before investing.

Additional Disclosures for Marketing and Reporting

To the extent required by applicable law, performance presentations should clearly disclose whether results are gross or net of fees and expenses; the relevant inception dates and measurement periods; the inclusion or exclusion of cash; the material calculation methodologies and assumptions; and any material changes to strategy, personnel, service providers, valuation policies, or benchmarks over the periods presented. Investors should consider the full context of the presentation, including all footnotes and qualifying information, when evaluating performance.

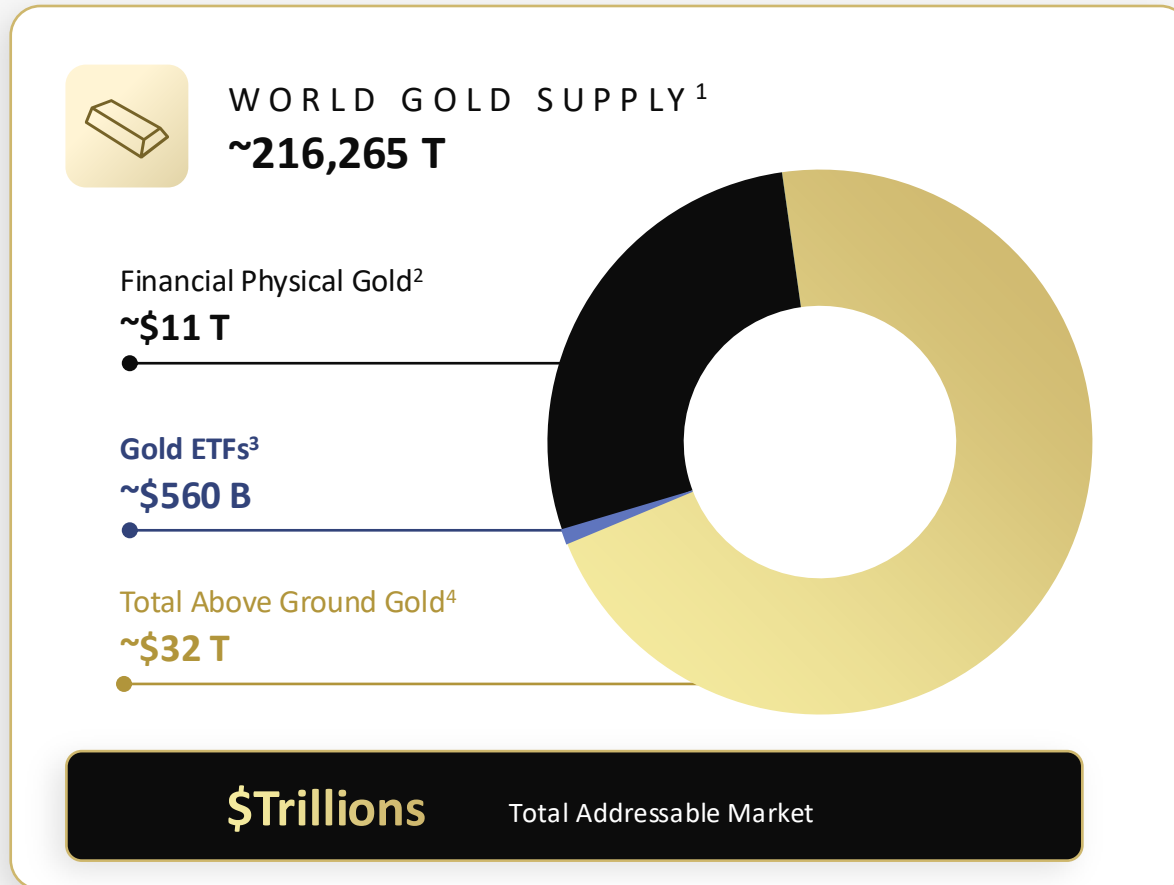
STREAMEX MISSION STATEMENT

Unlock the full potential of commodity assets
through **tokenization**

Commodity Tokenization: Multi-Trillion-Dollar Total Addressable Market

Beginning with gold, Streamex tokenization technology is designed to modernize the global commodity market

Initial Target: Gold



Other Opportunities

SILVER

\$Trillions

Total Addressable Market

ROYALTIES +
STREAMS

**100s of
\$Billions**

Total Addressable Market

COPPER

**100s of
\$Billions**

Total Addressable Market

OIL & GAS

\$Trillions

Total Addressable Market

Streamex Platform: Purchase GLDY

Institutional grade infrastructure for the purchase of GLDY, Streamex's inaugural product

The screenshot displays the Streamex GLDY platform interface. At the top, there are navigation links for 'GLDY' and 'Documentation', along with 'Sign Up' and 'Sign In' buttons. The main content area is divided into several sections:

- Streamex GLDY Summary:** Includes 'Gold Price' at \$4,858.02, 'Current APY' at 3.50%, 'Total Value Locked (USD)' at \$9,536,531, and 'Total Value Locked (Oz T)' at 1,963.049.
- Market and Portfolio:** Tabs for 'Market' and 'My Portfolio'.
- Price Chart:** A line chart showing the price of GLDY from 2018 to 2026. The price starts around \$1.5k in 2018 and rises to \$4,858.02 by 2026, with a total increase of +290.44% (All).
- Transaction Form:** A 'Buy' button is highlighted. Below it, there are fields for 'Convert' (USD), 'Estimated Amount to Receive' (GLDY), and a 'Buy GLDY' button.
- Token Info:** A section providing details about the token, including the onchain address (0x622d...D819), gold reserves (1,963.049 Oz T), and price (1 GLDY = \$4,858.02).
- About:** A text block explaining that GLDY (Gold Yield Token) is a security token representing a non-voting digital share of Streamex Ltd., backed by one troy ounce of physical gold.



How to Buy GLDY

- ✓ Go to app.streamex.com
- ✓ Create an account and complete KYC/KYB
- ✓ Sign subscription documents and purchase GLDY using USD wire, USDC, BTC, ETH or SOL

For institutional clients please contact GLDY@streamex.com and the team will be happy to assist you

Streamex: Use Tokenization for Disruption and High Growth

Tokenization unlocks value added opportunities and disruption to allow Streamex to create highly accretive products

OUR APPROACH:



Disrupt traditional futures, options, and ETF markets. No contango, roll risk, or carry cost



Provide **superior working-capital** solutions & create value added securitized assets in the commodity industry



Creates a **capital light operating model** with attractive economics for Streamex while delivering value added products to investors

Strategic Partnerships & Service Providers

Streamex is supported by tier 1 partners and service providers

PARTNERS:



SERVICE PROVIDERS:



GLDY

INAUGURAL PRODUCT: LIVE AND AVAILABLE FOR PURCHASE



GLDY is a physical gold bullion-backed security that delivers up to 3.5% annualized yield paid in additional gold

Groundbreaking Institutionalized Asset Provides Yield on Physical Gold Holdings

Building the foundation for scalable, institutional-grade instruments that can support billions of dollars in investment and unlock entirely new opportunities for investors

STRATEGIC PARTNERSHIP



+



Streamex has exclusive rights to tokenize yield-bearing gold products with Monetary Metals. Monetary Metals provides access to its precious metals leasing and bond programs.

What is GLDY

GLDY: Yield-Bearing Tokenized Gold

GLDY: Gold + Yield

- Stablecoin Security: Gold + 3.5% Yield
- 1 GLDY = 1 fine troy oz of gold bullion
- Gold is leased to generate yield
- Total return to holders = Gold Price Change + Yield Payments
- Eligible to be held by ETFs
- No futures, options, carry cost or contango
- Token is tradeable and redeemable upon issuance
- Potential tax efficiency due to unique structure



The GLDY token is a restricted security available only to Accredited Investors. Full terms are provided via the private placement memorandum (PPM). GLDY launched February 25, 2026 and is available for purchase at app.streamex.com.

GLDY Token Unlocks Investment Product Previously Unavailable to Public Investors

The ability to earn yield on gold, while maintaining direct exposure to spot gold prices, fundamentally challenges the value proposition of other readily-accessible gold investment products

The market cap of gold ETFs, which provide no yield and cost money to unit holders, is over \$560 billion¹



\$560 B¹

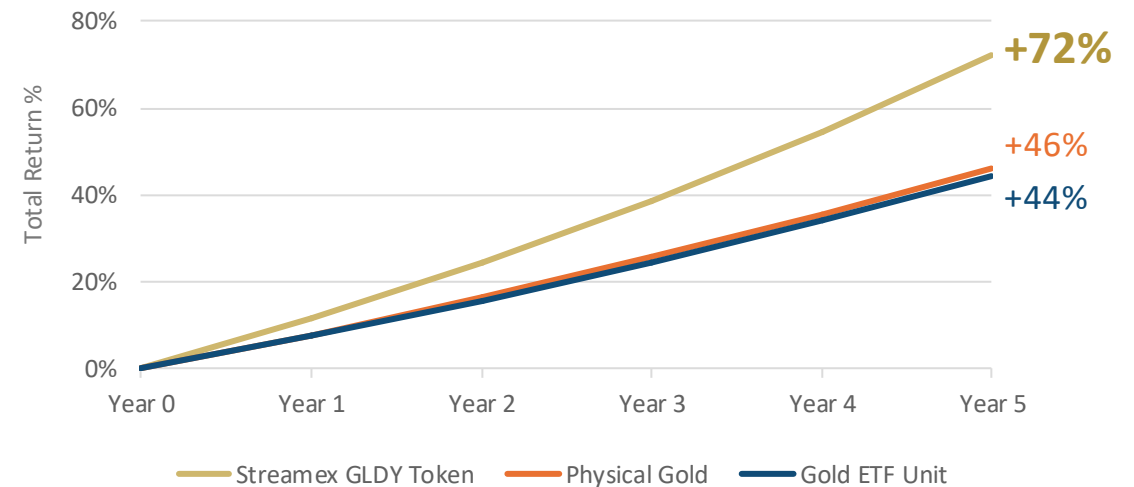
Total Gold ETFs Market Cap



No Yield

INVESTOR RETURNS:





Streamex GLDY Token vs. Physical Gold vs. Gold ETF Unit



Case study assumes an average of 8% annualized spot gold price appreciation, 3.5% annualized yield passed through the Streamex GLDY Token, annual storage fees of 0.1% for Physical Gold, and Gold ETF Unit annual MER of 0.4%

RWA Market Comparison Table

Comparing GLDY to other similarly structured products

METRIC				
Total Asset Value	\$688M	\$2.25B	\$2.35B	\$2.63B
 Holders	56	101	81,772	38,831
APY (%)	2.91%	3.47%	N/A	N/A
Minimum Investment	\$100,000 USD	\$5M USD	N/A	N/A
Liquidity	Mint/Redeem	Mint/Redeem	Secondary Markets	Secondary Markets
Launch Date	01/26/2023	03/04/2024	08/26/2019	10/31/2021

Valuation Metrics

Lifetime Value of a GLDY Token

Streamex will capture a variety of fee streams for the lifetime of each token

\$1,500+
PER TOKEN

- Lifetime value estimated via 30-year NPV model
- Key inputs include:
 - Recurring lease fees
 - Recurring transfer fees (trading)
 - One-time tokenization fees
- Upside to this estimate as trading volume increases
- Tokens require very low permanent capital allocation from STEX, creating extremely attractive ROIC potential
- Customer acquisition model well-supported by this figure

NPV values are non-cash. Cash is realized over the period of the NPV calculation. These figures are for illustration purposes only.

There can be no assurance that the figures in these illustrations will be achieved. NPV assumes 30-year fund life, 8% avg gold price increase, 0.25% tokenization fee, 1% annual lease rate fee, 10 bp token transfer fee rate. Discount rate of 10%.

Highly Scalable GLDY Economics: NPV

Streamex NPV grows with both issuance level and GLDY trading volume

SCENARIO TABLE:

Estimates of Revenue
NPV by fund size

	Base Case NPV
\$1 billion GLDY outstanding	~\$400 million
\$5 billion GLDY outstanding	~\$2 billion

- Durable instruments
- Fee streams persist for life of token
- 10% discount rate assumed
- \$4,000 gold price with 8% appreciation assumed
- Moderate levels of token trading assumed

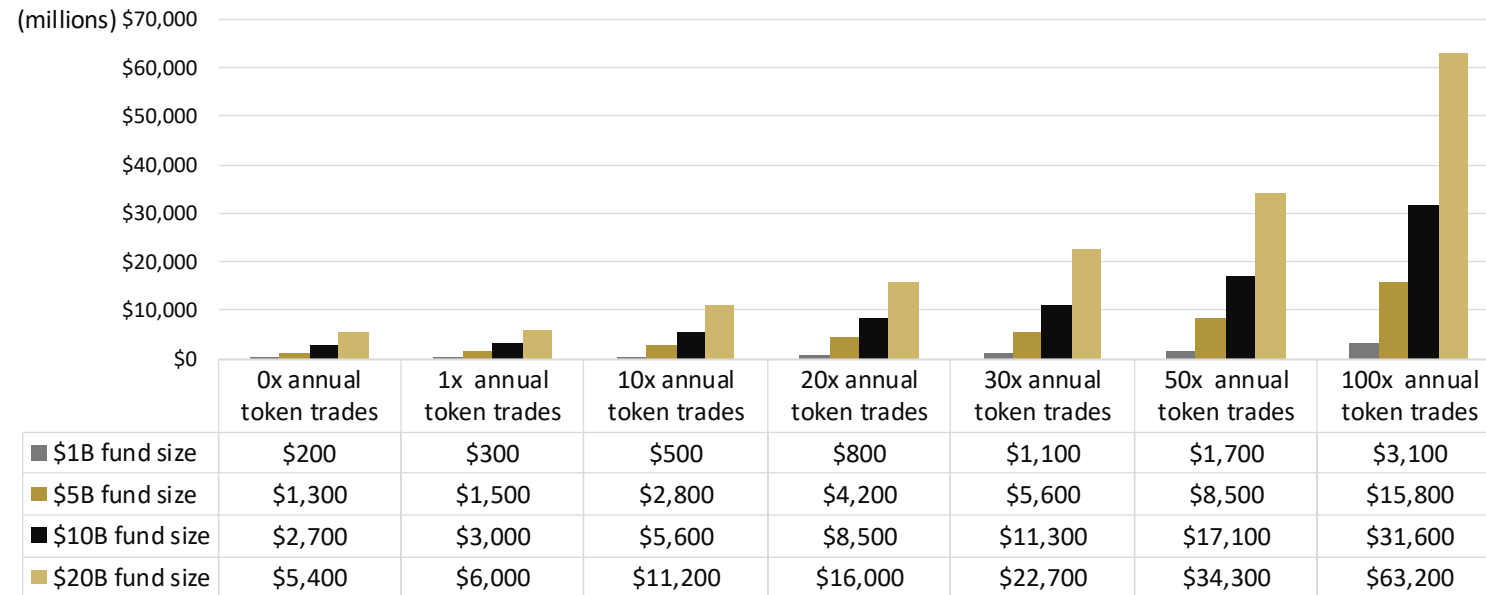
Data is for illustration purposes only. Revenue consists of tokenization fees, yield capture, and trading fees. While management believes this to be a reasonable scenarios, there can be no assurance that the illustrative figures contained herein will be achieved. NPV assumes 30-year fund life, 8% avg gold price increase, 0.25% tokenization fee, 1% annual lease rate fee, 10 bp token transfer fee rate. Discount rate of 10%.

Token Trading Volume Drives Increased Fund NPV

Existing gold token market reached over 90 annual token trades per year¹

SCENARIO TABLE :

Estimates of fund NPV at varying levels of initial fund size (GLDY outstanding) and annual token trades



- Durable instruments
- Fee streams persist for life of token
- 10% discount rate assumed
- \$4,000 gold price with 8% appreciation assumed

NPV values are non-cash and have been rounded down to the nearest hundred-million-dollar value in all cases. Cash is realized over the period of the NPV calculation. These figures are for illustration purposes only. There can be no assurance that the figures in these illustrations will be achieved. NPV assumes 30-year fund life, 8% avg gold price increase, 0.25% tokenization fee, 1% annual lease rate fee, 10 bp token transfer fee rate. Discount rate of 10%.

Strategic Roadmap

Product Pipeline & Roadmap

Next product: Tokenized Silver Asset



Silver-backed tokenized asset – est. Q2

Structure

- Tokenized silver backed asset – available to retail investors

Yield Components

- Defi Focused. Vaults. Retail availability, Wide secondary market expansion potential, Hyperliquid, centralized exchanges, etc...

Stable Asset Structure

- Complement to GLDY



Royalties/Streams



Copper



Oil/Gas

Become the infrastructure layer for tokenized commodities.

Product Roadmap: Core Token Launches

Streamex technology removes historic counterparty inefficiencies between investors and firms in the commodities space, enabling rapid adoption and value creation in commodity working capital industries



Executive Leadership Team



Henry McPhie
Co-Founder & CEO

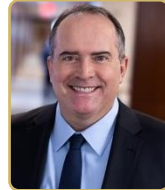


Founder of FatCats Capital – A Solana based NFT project

- Third largest NFT project in the world at launch
- Grew a community of over 100,000 people

Founder of Lynx Web 3 – A software development and blockchain incubation company

Mining Engineer – McGill University



Mitchell Williams, CFA®
Chief Investment Officer



Deep Wall Street and capital markets expertise with a focus on innovation, disruption, and institutional investment leadership

- Former Fintech analyst at Credit Suisse
- Sole Portfolio manager at Oppenheimer Funds' flagship Value Fund
- Senior Managing Director and Global Head of Public Markets at Wafra Inc.



Christine Plummer
Chief Financial Officer



Senior finance executive with more than 30 years of experience leading global controllership, regulatory reporting, and finance transformation across financial services and fintech.

- Former Global Controller at Coinbase, leading 50+ professionals across financial close, regulatory reporting, and operational readiness
- Previously Global Deputy Controller at MSCI Inc. and Managing Director at Morgan Stanley; began career at Ernst & Young



Morgan Lekstrom
Co-Founder & Executive Chairman



CEO of NexMetals Resources

- Executed a \$46M non brokered private placement, 2nd largest ever in Canada

Former President of NexGold

Senior Technical Roles at:

- Freeport McMoran Indonesia, Rio Tinto Mongolia, G3 Grain Terminal Vancouver



Damion Simpkins
Head of Engineering



Crypto-native full stack developer, deep expertise across ML, AI, fintech, aerospace, blockchain, and the metaverse

- Built CircleBlack's financial data pipelines integrating with TD Bank, Schwab, and Fidelity for real-time portfolio aggregation
- Led Edison's blockchain platform for EDI data exchange between global manufacturers including Adidas and Nike
- First engineer at Modrokk, architected a 3D metaverse platform

Board of Directors



Anthony Marciano

Director



Clinical Professor of Finance at NYU Stern School of Business, specializing in corporate finance, mergers and acquisitions, and financial markets.

- Former senior executive at Goldman Sachs, Morgan Stanley, and Drexel Burnham Lambert
- Previously taught advanced corporate finance and M&A at MIT Sloan School of Management and the University of Chicago Graduate School of Business



Shawn Matthews

Director



Founder and Chief Investment Officer of Hondius Capital Management, a global alternative asset manager.

- Former CEO of Cantor Fitzgerald & Co., bringing more than 30 years of global investment, trading, and executive leadership experience
- Supports Streamex's strategic growth, capital markets initiatives, and governance as an independent member of the Board of Directors



Kevin Gopaul

Director



CIO, REX Financial Canada. ETF architecture, institutional product strategy, quantitative investments, and cross-border expansion expert.

- Global Head of ETFs, Chief Investment Officer, and Canadian CEO at BMO Global Asset Management
- Senior roles at Barclays Global Investors, Sun Life Financial, and Scotia Capital
- 25+ years of global asset management & capital markets experience



Morgan Lekstrom

Co-Founder & Executive Chairman



CEO of NexMetals Resources

- Executed a \$46M non brokered private placement, 2nd largest ever in Canada

Former President of NexGold

Senior Technical Roles at:

- Freeport McMoran Indonesia, Rio Tinto Mongolia, G3 Grain Terminal Vancouver



Henry McPhie

Co-Founder & CEO



Founder of FatCats Capital – A Solana based NFT project

- Third largest NFT project in the world at launch
- Grew a community of over 100,000 people

Founder of Lynx Web 3 – A software development and blockchain incubation company

Mining Engineer – McGill University



Mitchell Williams, CFA[®]

Chief Investment Officer



Deep Wall Street and capital markets expertise with a focus on innovation, disruption, and institutional investment leadership

- Former Fintech analyst at Credit Suisse
- Sole Portfolio manager at Oppenheimer Funds' flagship Value Fund
- Senior Managing Director and Global Head of Public Markets at Wafra Inc.

General Risk Factors

An investment in the Tokens involves significant risks and is suitable only for sophisticated investors who are able to bear the risk of loss, including the possible loss of their entire investment. **Before making an investment decision, prospective Tokenholders should carefully consider all of the risks described in this presentation, as well as the other risks that are more fully detailed in the Private Placement Memorandum that accompanies this presentation. The risks summarized below are general risk factors and are not exhaustive and do not purport to cover all risks associated with an investment in the GLDY Tokens. Additional risks and uncertainties, including those not presently known or deemed immaterial, may also affect the GLDY Tokens and their value. Prospective investors should consult their own legal, tax, and financial advisors before investing. No guarantee or representation is made that the GLDY Tokens will achieve their return objectives.**

Limited Operating History.

Streamex Ltd. has a limited operating history and therefore may not be able to operate its business, implement its investment strategy or generate sufficient revenue to make or sustain distributions to investors. Failure to procure adequate funding and capital could adversely affect its ability to grow and/or expand its business, which can negatively impact its performance.

Reliance on the Servicer.

The success of Streamex Ltd. depends on the ability of a servicer entity, which will be an affiliate of Streamex (the “Servicer”), to develop and implement investment strategies to achieve the investment objectives of the GLDY Tokens. Although the Servicer may impose limits on the types of positions that Streamex Ltd. may take, or the concentration of its investments, the Articles impose no such limits. Tokenholders will have no right or power to take part in the management of Streamex Ltd. The investment performance of the GLDY Tokens could be materially adversely affected if any members of the investment team were to die, become ill or disabled, or otherwise cease to be involved in the active management of the business of the SPV’s portfolio.

Dependence on Key Service Providers.

The SPV is dependent on the services of its key personnel and the Fund’s key service providers, including Zedra as administrator, Monetary Metals, as the company primarily responsible for sourcing leases, as well as gold custodians. There can be no assurance that the key personnel and key service providers will be successful, or that they will continue to be associated with the SPV.

Absence of Regulatory Oversight.

Streamex Ltd. is not required, and does not intend to register as an Investment Company under the laws of any jurisdiction. For instance, the provisions of the 1940 Act, which may provide certain regulatory safeguards to investors, are not applicable.

Governmental and Regulatory Scrutiny; Litigation and Regulatory Risks.

The SPV and the Servicer operate in a rapidly evolving regulatory environment, particularly with respect to tokenized assets and blockchain technology. In recent years, governments and regulatory agencies have increased scrutiny of financial services, private funds, asset managers, and digital asset markets, including tokenized products. Responding to examinations, investigations, or enforcement actions can be time-consuming and costly, and may divert the Servicer’s management from operations. Even if ultimately resolved favorably, any lawsuit or regulatory proceeding against Streamex Ltd. or the Servicer could harm their reputations and result in penalties or restrictions on business.



streamex

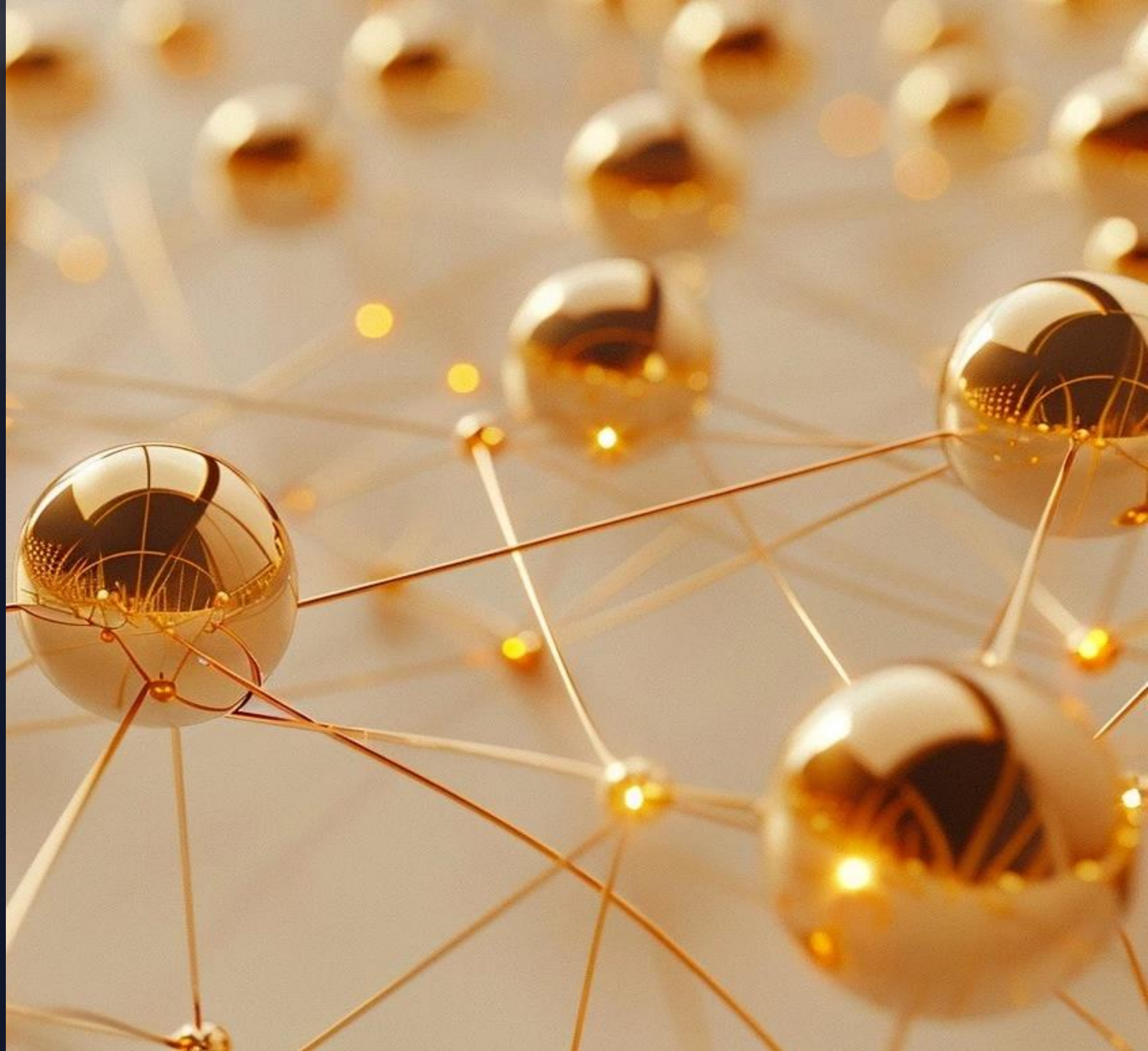
Adele Carey

Alliance Advisors Investor Relations

acarey@allianceadvisors.com

www.streamex.com

Nasdaq: **STEX**

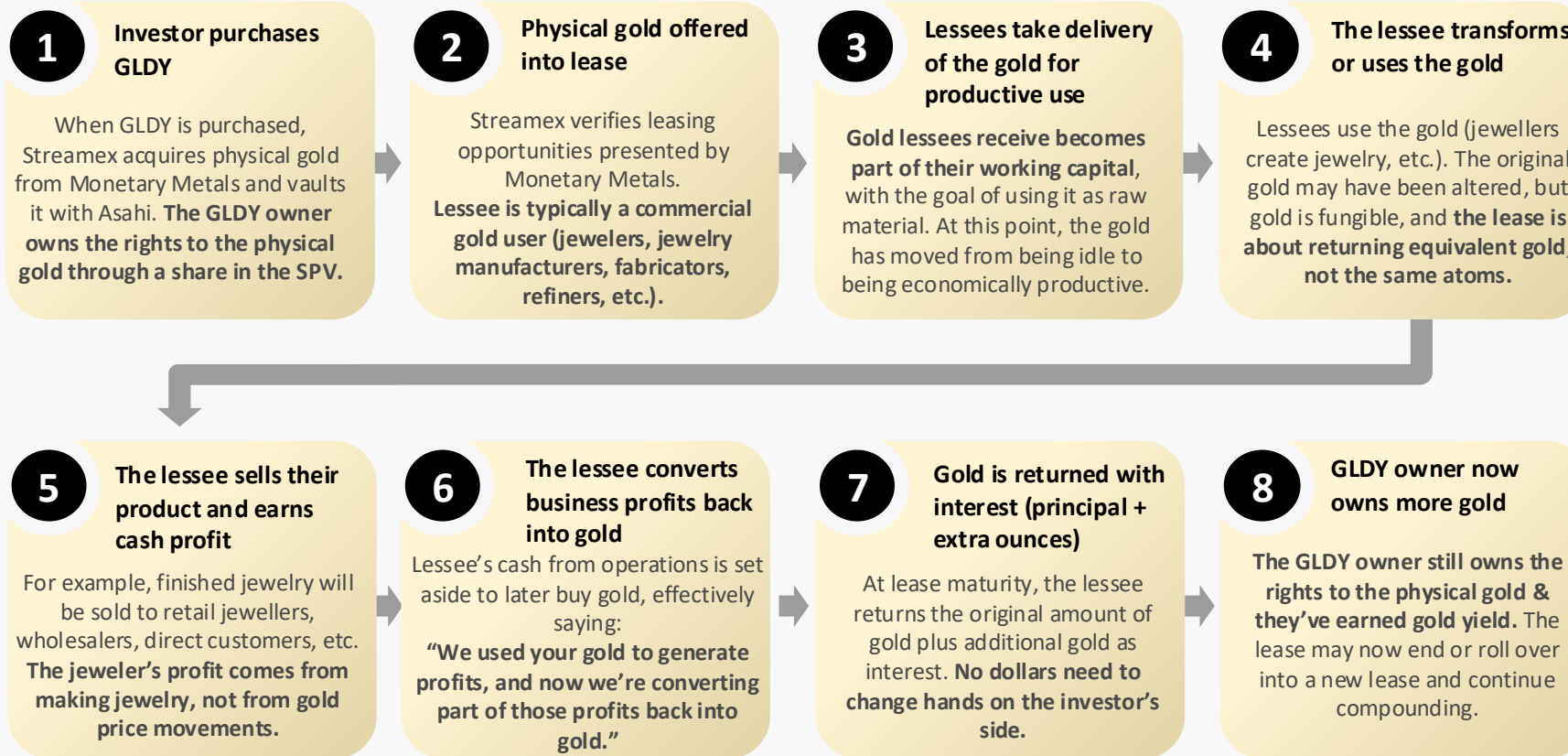


| Appendix

GLDY Gold Leasing Process

Gold leasing is the process of renting out your physical gold to businesses who use it for working capital; Streamex rents gold to a business, the business turns it into products, earns cash profits, then converts part of those profits back into more gold to repay principal plus interest

PROCESS:



Factors impacting lease yield:

- Duration of the lease
- Leasing counterparty
- Location of lessee
- Interest rates

Risk management & security:

- Overcollateralized lessees (110%)
- Independent audits
- Tier 1 insurance on leases
- Streamex retains title to the gold, no credit exposure
- All gold RFID tagged

Gold is custodied with Asahi

GLDY Flow of Funds & Gold Leasing Mechanism

STREAMEX PLATFORM:

